



SHARON LUTHERAN CHURCH KINDERGARTEN

Kwun Tong

Address : UNIT 405-415, 4/F, KAN WAH HOUSE, LOK WAH NORTH ESTATE, NGAU TAU KOK, KOWLOON

Joining
2022/23 KG Education Scheme

School No. 325236

Tel. : 2756 3398

Fax. : 2798 7604

Location No. 0001

School Information	
School Category	Non-profit-making
Student Category	Co-educational
Name of School Supervisor	MR MAK CHUNG TONG
Name of School Principal	MS LEE PUI YIN
School Founding Year	1985
Total No. of Permitted Accommodation of Classrooms in Use (Data as of Sept. 2021)	150
Number of Registered Classrooms	6
Outdoor Playground	No
Indoor Playground	Yes
Music Room	Yes
Other Special Room(s) / Area(s)	Gross-motor activity room, STEM area, Multi-function room.
Total No. of Principal & Teaching Staff (Data as of Sept. 2021) *	13
School Website	http://www.sharonlutheran.edu.hk
Quality Review : Result and Report	Meeting the prescribed standards https://www.edb.gov.hk/attachment/en/edu-system/preprimary-kindergarten/quality-assurance-frame-work/qr/qr-report/Sharon_LutheranCh.pdf

No. & Qualification of Principal & Teaching Staff (Data as of Sept. 2021) *	
Academic Qualification	
Degree holders	9
Non-degree holders	4
Professional Qualification	
C(ECE) or above	13
Qualified KG teachers	0
Other teacher trainings	0
Qualified assistant KG teachers	0
Others	0

* Excluding staff serving aged 0-2

Teacher to Pupil Ratio (Data as of Sept. 2021)	
Teacher to pupil ratio in morning session	1 : 10.5
Teacher to pupil ratio in afternoon session	1 : 7.8
Ratio includes classes aged 2-3	No

No. of Enrolment (Data as of Sept. 2021)				
	Nursery	Lower KG	Upper KG	Total
AM Session	8	19	15	42
PM Session	0	0	0	0
WD Session	31	31	32	94

Annual Fees (2022 / 23 School Year)				
		Nursery	Lower KG	Upper KG
Annual Fees After Deduction of Government Subsidy (No. of Instalment)	AM Session	Free	Free	Free
	PM Session	Free	Free	Free
	WD Session	\$2,200 (10)	\$2,200 (10)	\$2,200 (10)

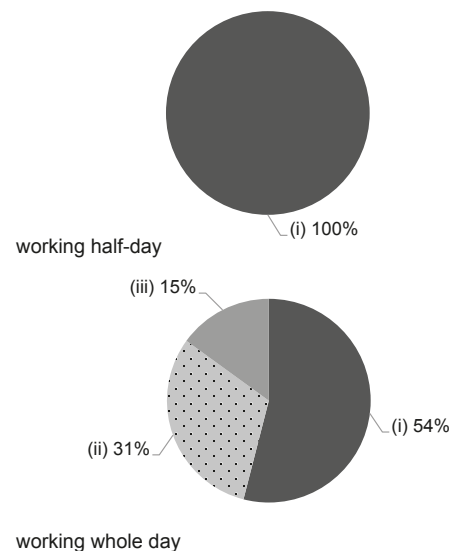
Please refer to the Fees Certificate for details of fees information.

Child Care Services (Data as of Sept. 2021)			
With child care services for children aged 2-3	-	With child care services for children aged under 2	-
Fee level (per annum)	(half - day)	No. of enrolment aged 2-3	0
	(full - day)	Joining Child Care Centre Subsidy Scheme	-
Providing occasional child care services	-	Providing extended hours services	-

Curriculum Details	
Curriculum type : Local	
Curriculum planning	
<p>The "child-centered" curriculum is prepared in an integrated and comprehensive way according to children's development stages, interests, abilities, and needs, thus nurturing students to get a balanced development in knowledge, skills and attitudes.</p> <p>We will follow the "Kindergarten Education Curriculum Guide" (2017) to plan curriculum. Children of nursery classes will not be asked to write, and there will not be mechanical copying exercises and drills on calculation.</p>	
Learning / Teaching approach & activities	
<p>Learning emphasizes diversification, comprehensiveness and balance by adopting biliteracy and trilingualism, with thematic teaching and tailor-made activities in conjunction with teaching strategies under "brain science concept", which encourages joint participation, cooperative learning and thinking proliferation.</p>	
Assessment of children's learning experiences	
<p>With preparation of children personal portfolio on learning, it holds diversified assessments and continuous observation to keep records on children's learning outcomes, including six learning areas of languages, early mathematics, physical fitness and health, science and technology, individuals and groups, and arts.</p>	

Monthly salary range of principal & teaching staff
(Data as of Mar. 2022)

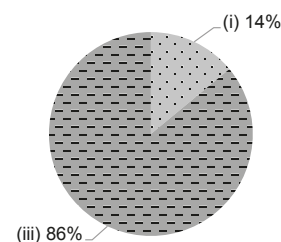
- (i) ≤ \$30,000
- (ii) \$30,001 - \$40,000
- (iii) > \$40,000



School Characteristics	
School vision and mission	
<p>Teachers are full of kindness with the everlasting love of Christ, so that children can learn in a happy environment. The preparation of integrated curriculum cares all-round development and cultivates spirituality, morality, intelligence, physical fitness, sociability and aesthetics. The school emphasizes spiritual and moral education to help students understand the truth from the Bible, in order to learn to love others as oneself, while cultivating children's positive values to build good characters featuring politeness, humbleness, honesty, responsibility and respect for others.</p>	
Support to students	
<p>"Introduction to Kindergarten Admission", "adapt to kindergarten", "introduction to Primary School", "Primary School Experience Week". It also collaborates with community agencies to organize various activities for enrichment of children learning, while identifies students who have potential difficulties in learning and through individual observation, track records and screening, in order to provide appropriate counseling, support and early referrals.</p>	
Support to non-Chinese speaking (NCS) students	
No information	
Support to students with special needs	
Joining the On-site Pre-school Rehabilitation Services.	
Link with parents	
Parent-teacher association : Yes	
Other activities / communication with parents	
<p>It organizes interviews in Parents' Day, parent lesson observations, Parent Teacher Association journals, school family activities, parent-child activities in Lunar New Year, parent-child reading program, family travels, family sports day, family day camp, parenting seminars, all kinds of parent-child competitions and school open day etc., as well as setting up questionnaires for parents to express their views through different channels and maintaining good contact with the school.</p>	

Working experience of principal & teaching staff in pre-primary education
(Data as of Mar. 2022)

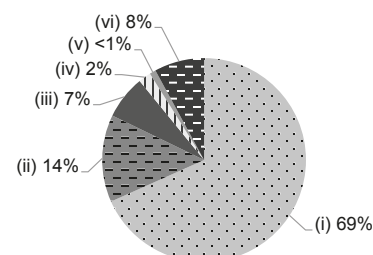
- (i) < 4 years
- (ii) 4 - 7 years
- (iii) > 7 years



2020/21 School Expenditure Information

Expenditure information based on audited account Being Audited

- (i) salary of principal & teaching staff
- (ii) non-teaching staff salary
- (iii) rent, management fees, rates & government rent
- (iv) teaching resources
- (v) staff training & professional development
- (vi) other expenses



Price of Major School Items (2021 / 22 School Year)			
Summer uniform	\$260 / set	Winter uniform	\$575 / set
School bag	\$75 / each	Tea and snacks	\$900 / year
Textbooks	\$1,400 / year	Exercise books/ workbooks	\$360 / year
Stationery	\$400 / year	Bedding items	\$270 / set