



CHING CHUNG YU NGA KINDERGARTEN
(Name in the past: CHING CHUNG HING TUNG
KINDERGARTEN)

Hong Kong
East

Address : G/F, HING CHO HOUSE, HING TUNG ESTATE,
SHAUKEIWAN, HONG KONG

Tel. : 2885 8300

Fax. : 2885 5268

Joining
2022/23 KG Education Scheme

School No. 520144

Location No. 0001

School Information

School Category	Non-profit-making
Student Category	Co-educational
Name of School Supervisor	MR SIU PING KEUNG
Name of School Principal	MS CHAN SHUK WAI
School Founding Year	1996
Total No. of Permitted Accommodation of Classrooms in Use (Data as of Sept. 2021)	92
Number of Registered Classrooms	6
Outdoor Playground	Yes
Indoor Playground	Yes
Music Room	Yes
Other Special Room(s) / Area(s)	Computer room, Activity room, Play room
Total No. of Principal & Teaching Staff (Data as of Sept. 2021) *	11
School Website	http://www.cckght.edu.hk
Quality Review : Result and Report	Meeting the prescribed standards https://www.edb.gov.hk/attachment/tc/edu-system/preprimary-kindergarten/quality-assurance-frame-work/qr/qr-report/ChingChung_HingTung.pdf

No. & Qualification of Principal & Teaching Staff (Data as of Sept. 2021) *

Academic Qualification	
Degree holders	5
Non-degree holders	6
Professional Qualification	
C(ECE) or above	11
Qualified KG teachers	0
Other teacher trainings	0
Qualified assistant KG teachers	0
Others	0

* Excluding staff serving aged 0-2

Teacher to Pupil Ratio (Data as of Sept. 2021)

Teacher to pupil ratio in morning session	1 : 9.5
Teacher to pupil ratio in afternoon session	1 : 6.3
Ratio includes classes aged 2-3	Yes

No. of Enrolment (Data as of Sept. 2021)

	Nursery	Lower KG	Upper KG	Total
AM Session	7	11	11	29
PM Session	0	0	0	0
WD Session	20	22	15	57

Annual Fees (2022 / 23 School Year)

		Nursery	Lower KG	Upper KG
Annual Fees After Deduction of Government Subsidy (No. of Instalment)	AM Session	Free	Free	Free
	PM Session	Free	Free	Free
	WD Session	\$6,550 (10)	\$6,550 (10)	\$6,550 (10)

Please refer to the Fees Certificate for details of fees information.

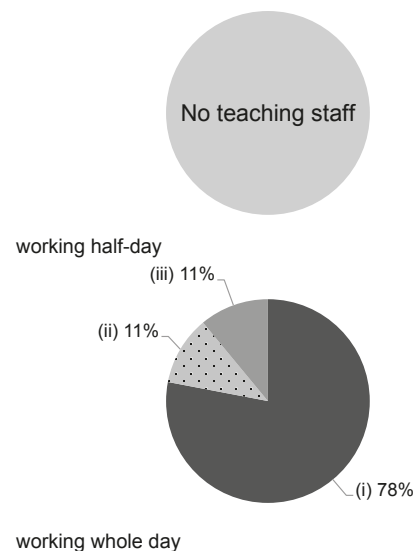
Child Care Services (Data as of Sept. 2021)

With child care services for children aged 2-3	Yes	With child care services for children aged under 2	No
Fee level (per annum)	\$26,000 (half - day)	No. of enrolment aged 2-3	19
	\$44,800 (full - day)	Joining Child Care Centre Subsidy Scheme	No
Providing occasional child care services	No	Providing extended hours services	No

Curriculum Details	
Curriculum type : Local	
Curriculum planning	
<p>1. The curriculum adopts diversified teaching activities, takes children as the center, and emphasizes on happy learning and balanced development. 2. It provides a number of activities of interest to develop multiple intelligences. 3. Physical and intelligent teaching can improve the children's ideation and quicken their thinking, inspire their potential, and enhance their learning ability and adaptability to the social environment. 4. The curriculum stresses on moral training in order to enhance children's personal character.</p>	
<p>We will follow the "Kindergarten Education Curriculum Guide" (2017) to plan curriculum. Children of nursery classes will not be asked to write, and there will not be mechanical copying exercises and drills on calculation.</p>	
Learning / Teaching approach & activities	
<p>1. Multimedia teaching and puzzle computer courses are to improve children's interest in learning. 2. Interesting English and Mandarin class are to improve the bi-literacy and tri-lingualism language ability of children. 3. Group learning, off-school visit are to enhance children's learning effectiveness. 4. Strengthen children's skills of listening, speaking, reading and writing, and enhance children's basic language ability.</p>	
Assessment of children's learning experiences	
<p>Continuously observe and record children's all-round development and learning effectiveness, and report to their parents in the form of children's development file.</p>	

Monthly salary range of principal & teaching staff
(Data as of Mar. 2022)

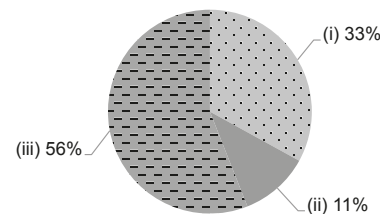
- (i) ≤ \$30,000
- (ii) \$30,001 - \$40,000
- (iii) > \$40,000



School Characteristics	
School vision and mission	
<p>Adhering to Qingsong Guan's spirit of prospering education and cultivating talents, and taking respect nature and goodness as motto, our school is to cultivate children's whole-person development, enlighten children to think independently, to learn actively, and to develop multiple intelligences. We are to provide high-quality preschool education service for children.</p>	
Support to students	
<p>1. Arrange preschool parent-child experience lessons and freshman adaptation period. 2. Cooperate with community groups to enhance effectiveness in learning and teaching. 3. Set multiple intelligence training class, music story, Olympic math class, Lego creative teaching, kung fu class. 4. Set summer interest class. 5. Organize children's traffic safety team. 6. Provide appropriate tutoring for students who are slower in some aspects. 7. Set a primary school entrance adaptation period.</p>	
Support to non-Chinese speaking (NCS) students	
<p>Received Grant for Support to NCS Students; arrange interpretation / translation services; create an enriched language environment for mastery of the Chinese language; create an inclusive learning environment to facilitate students' integration; facilitate professional development for teachers to develop effective strategies to help NCS students learn Chinese; participate in school-based professional support programmes organised by EDB.</p>	
Support to students with special needs	
<p>Joining the On-site Pre-school Rehabilitation Services.</p>	
Link with parents	
<p>Parent-teacher association : No</p>	
Other activities / communication with parents	
<p>Hold parents' seminars, workshops, volunteer activities, parents' day, sunshine phone, family travel, visit activities.</p>	

Working experience of principal & teaching staff in pre-primary education
(Data as of Mar. 2022)

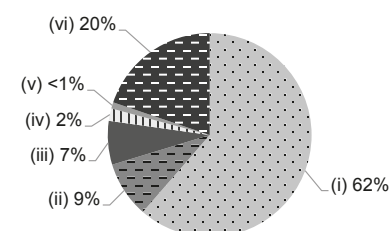
- (i) < 4 years
- (ii) 4 - 7 years
- (iii) > 7 years



2020/21 School Expenditure Information

Expenditure information based on audited account Yes

- (i) salary of principal & teaching staff
- (ii) non-teaching staff salary
- (iii) rent, management fees, rates & government rent
- (iv) teaching resources
- (v) staff training & professional development
- (vi) other expenses



Price of Major School Items (2021 / 22 School Year)			
Summer uniform	\$398 / set	Winter uniform	\$565 / set
School bag	\$110 / each	Tea and snacks	\$1,300 / year
Textbooks	\$1,200 / year	Exercise books/ workbooks	\$260 / year
Stationery	No such item	Bedding items	No such item